

# JanuCam™

Small Field-of-View Gamma Camera

*“Versatile Gamma Imaging in a Mobile, Precision Platform”*

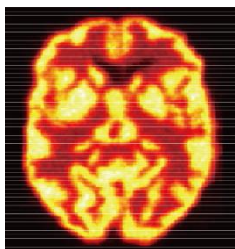


## Compact Design, Seamless Mobility

JanuCam™ requires just 2.4 m<sup>2</sup> of floor space and features a foldable structure for efficient storage and movement. Its smooth-rolling wheels and portable form factor allow quick relocation to emergency or operating rooms when needed—maximizing clinical flexibility without compromising performance.

## Effortless Operation

JanuCam™ features smooth vertical and tilt motion for precise detector positioning in virtually any orientation. Its open, ergonomic design allows imaging of patients seated or lying down. The integrated touchscreen enhances workflow with intuitive control over presets, positioning, and data acquisition.



## High Resolution SFOV Imaging

JanuCam™ delivers exceptional image clarity through compact 1.5-inch PMTs and SFOV design, ideal for targeted imaging of the thyroid, breast, and joints. Protocol-specific accessories and precision collimators ensure outstanding spatial resolution and diagnostic confidence.

## ❖ Specifications

<b>System</b>	Vertical motion	680 mm (690 -1370 mm detector position from the floor)
	Tilt motion	-90 to 90 degree
	Foot print	1520×570 mm
	Dimension/weight	570(W)×1520(D)×1400(H) mm / 240kg(529lb)
<b>Detector</b>	Nal(Tl)	276.3 x 168.3 mm
	Thickness	8 mm
	PMT	32ea, 1.5 in.
	Lead shield	8 mm
<b>Collimator</b>		LEGP, LEHR, LEPH
<b>NEMA performance</b>	FOV	230×150 mm
	Energy	20 - 200 keV
	Resolution	≤9.9% @ 140keV(Tc-99m)
	Intrinsic Uniformity	CFOV (2, 2.5%), UFOV (2, 2.5%)
	Intrinsic resolution	CFOV: 3.3, UFOV: 3.8 mm
	Intrinsic linearity	CFOV (0.2, 0.2 mm), UFOV (0.2, 0.7 mm)
	Max. count rate	200 kcps (20% window)
	Extrinsic resolution	6.5 mm FWHM (LEGP)
	Sensitivity	200 cpm/uCi (LEGP)
<b>Acquisition console</b>	A/D conversion	40 MHz (X,Y,Z), 1024 ch,
	Max image pixel	4096×4096
	Pile up	Pile up rejection
	Documentation	Color laser
<b>Optional accessories</b>		Dicom, phantoms, UPS, etc.

## ❖ Software & Foot Print

